

Cupboard Bolt, Catch, Turn, and Latch

Cupboard Bolt

Material: Zinc Alloy with Polymer Slide and Knob
 Finish: Chrome Plated
 Dimensions: 2-1/8" x 1-1/2"
 Screw Size: #6

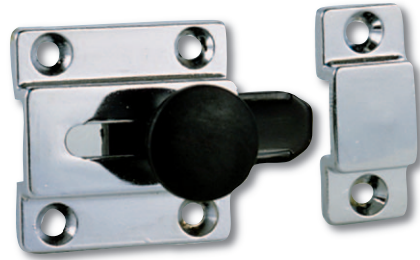


Fig. 1101

Retail Pkg.	OEM Bulk Pkg.
1101DP0CHR	1101000CHR

Cupboard Catch

Material: Zinc Alloy
 Finish: Chrome Plated
 Dimensions: 1-1/2" x 1-7/8"
 Screw Size: #6
 Features:

- No. 1 Supplied with box strike
- No. 2 Supplied with 3/8" offset box strike
- Spacer included with 1102DP2CHR package to allow for additional (3/16") offset

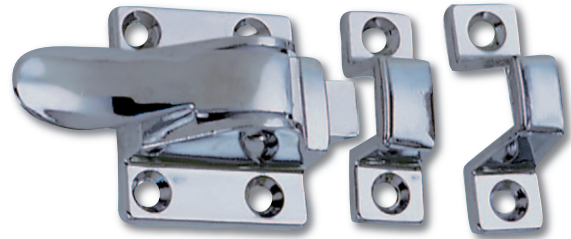


Fig. 1102

Strike Type	Retail Pkg.	OEM Bulk Pkg.
Box	1102DP1CHR	1102001CHR
Offset Box	1102DP2CHR	1102002CHR

3/16" Spacer for use with #2 Offset Box Strike



PROP 65 WARNING
(Contains Lead)

Cupboard Turn

Material: Zinc Alloy
 Finish: Chrome Plated
 Dimensions: 2-1/8" x 2-1/4"
 Screw Size: #6

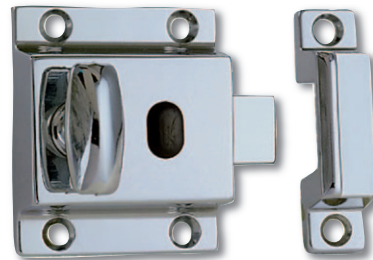


Fig. 0978

Retail Pkg.	Spare Parts Ordering Information	
0978DP0CHR	Strike Plate: 0976000CHR	Bevel with Cam: 0984000CHR

Latch with Sliding Lock Button

Material: Zinc Alloy
 Finish: Chrome Plated
 Dimensions: 2-1/8" x 2-1/4"
 Screw Size: #6



Fig. 0948

Retail Pkg.	Spare Parts Ordering Information	
0948DP0CHR	Strike Plate: 0976000CHR	Bevel with Cam: 0984000CHR